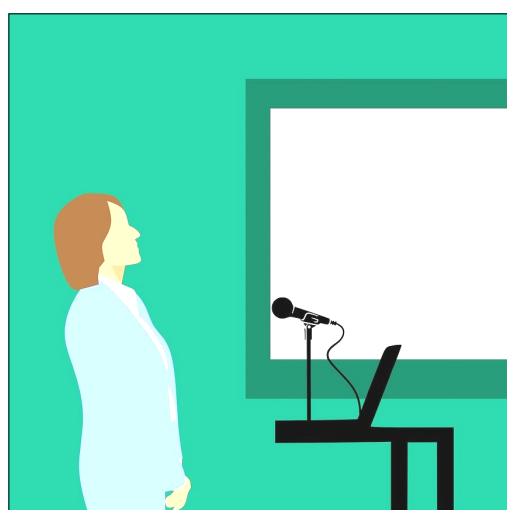




Evidence based training

NEWSLETTER AUGUST 2020 | Introducing onEvidence

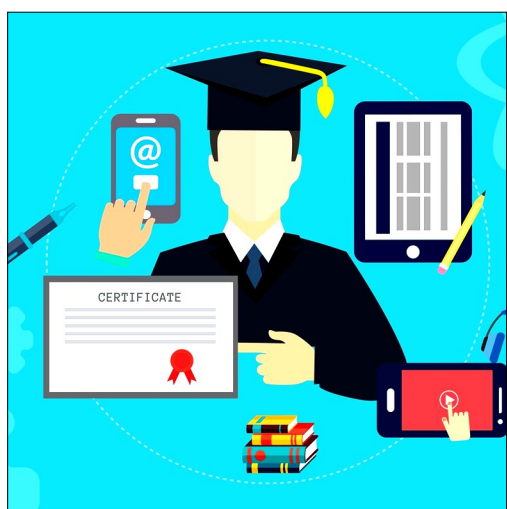
Evidence based training courses, education consultancy, and research services portfolio serving employers in the public, private and third sectors. onEvidence was established in response to a growing need for CPD training that could better inform practitioners and policy-makers. Evidence based practice produces more reliable, sustainable outcomes. Our training courses are developed using the best available current empirical research, incorporating the experience, expertise and judgement of our extended family of experts.



TRAINING

Evidence-based continuing professional development training courses delivered by our team of professional trainers led by Dr. Roxanne Khan. Workshop, on-site, or simply enroll your staff by email and they can complete their eLearning course at home.

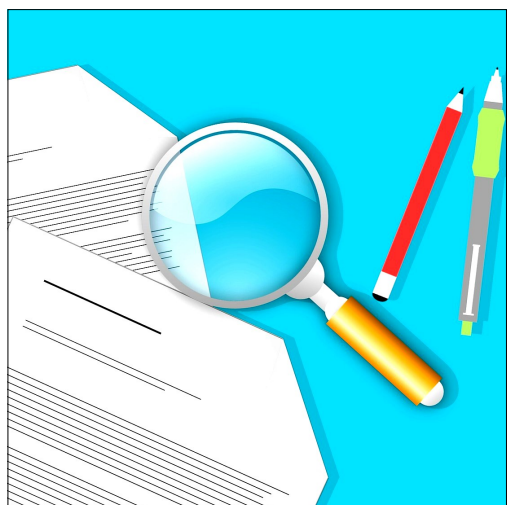
[Learn more...](#)



EDUCATION

We'd like to introduce you to our evidence based consultancy and training for schools, colleges, and universities. Education consultancy that offers objective support, advice, educational aids, and communications. We have developed a portfolio of educational services and resources that help you to achieve your teaching goals.

[Learn more...](#)



RESEARCH

The onEvidence research team works with policy makers, commissioners, care and health professionals to provide the evidence they need to make informed decisions. Let us help you to deliver the best outcomes for your service users. Tailored services to local authorities, care providers, government departments, NGOs, and universities.

[Learn more...](#)

Member



GET STARTED

www.onevidence.co.uk

E. enquiries@onevidence.co.uk